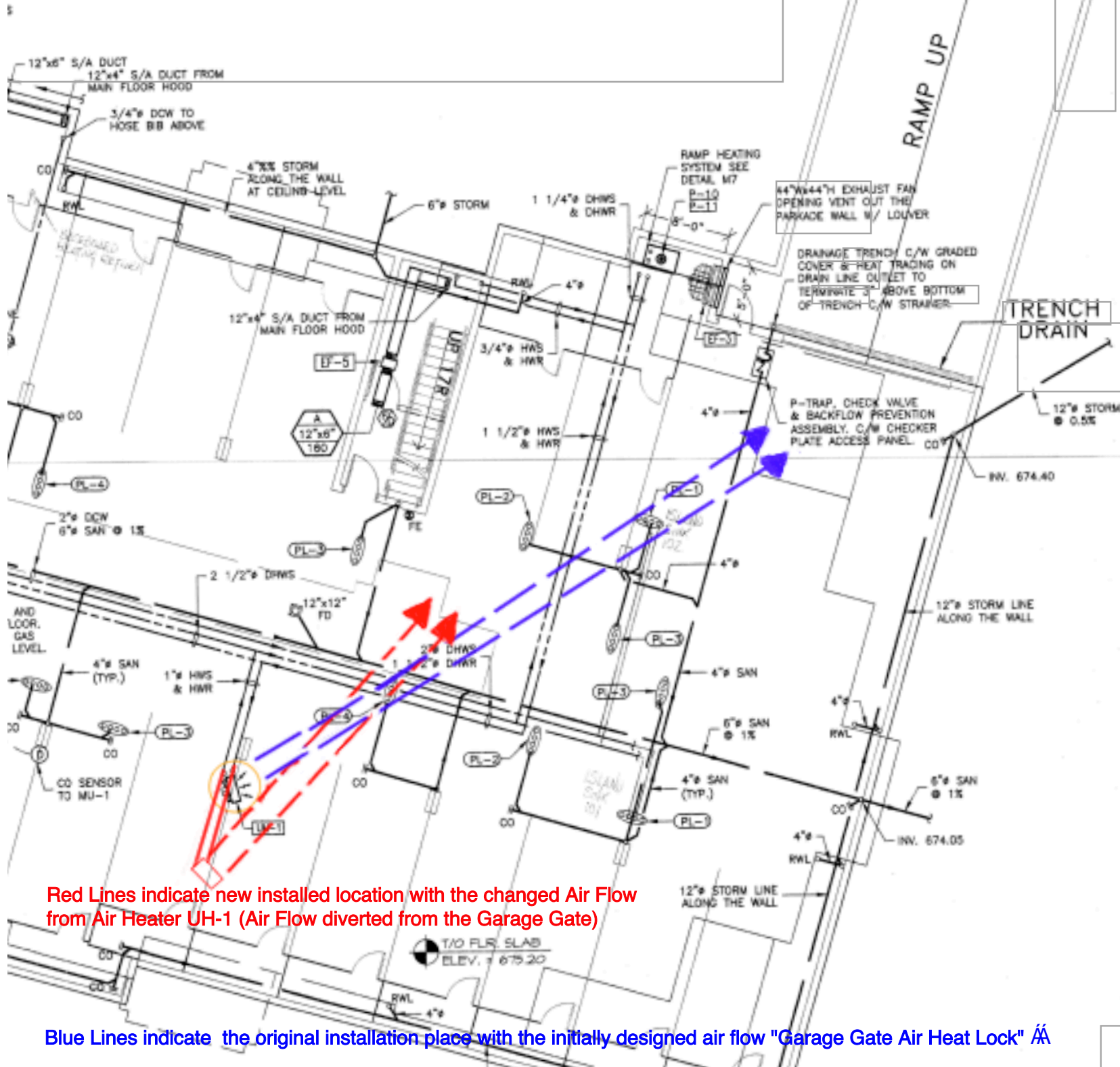


S/A DUCT FROM  
DOOR HOOD

6" DCW TO  
E BIB ABOVE





Red Lines indicate new installed location with the changed Air Flow from Air Heater UH-1 (Air Flow diverted from the Garage Gate)

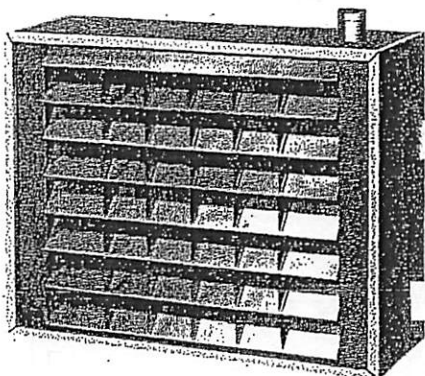
Blue Lines indicate the original installation place with the initially designed air flow "Garage Gate Air Heat Lock"



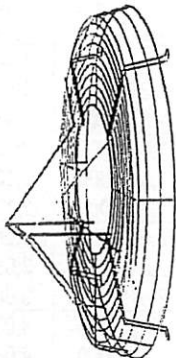




MODEL H



4 WAY LOUVER FIN DIFFUSER



MOTOR MOUNT

TABLE 1

STANDARD WATER UNIT (MAX. 2 PSIG)

CAT. No.	STEAM - 2 PSIG ENT. AIR - 60°F				MOTOR			CFM @ 60°F	OUTLET VELOCITY	SOUND CLASS	SPREAD STEAM 2 PSIG	
	EDR	COND. lb/hr	MBH	FIN. TEMP.	NOM. HP	NOM. RPM	NOM. AMP. @ 115 V				H	S
H-18	145	35.9	34.7	130	1/20	1000	0.94	460	483	1	9	19
H-24	176	43.9	42.4	118	1/20	1550	0.94	680	714	1	9	31
H-26	211	52.5	50.7	138	1/20	1000	0.94	595	369	1	9	20
H-36	252	62.6	60.5	124	1/20	1550	0.94	880	592	1	9	26
H-32	234	58.1	56.1	132	1/12	1000	1.50	725	488	1	9	19
H-40	284	70.8	68.4	117	1/12	1550	1.50	1120	756	2	9	32
H-44	304	76.5	73.9	134	1/12	1000	1.50	925	431	1	9	19
H-50	338	84.1	81.2	120	1/6	820	2.00	1250	556	1	10	24
H-58	375	93.2	90.0	118	1/12	1550	1.50	1435	678	2	11	30
H-60	398	98.9	95.5	118	1/6	1075	2.00	1525	714	2	11	31
H-70	438	108.8	105.2	126	1/6	820	2.00	1475	460	1	11	27
H-82	518	129.0	124.6	124	1/6	1075	2.00	1800	590	2	12	35
H-80	504	125.0	120.8	127	1/4	820	2.50	1685	552	2	13	45
H-96	585	145.4	140.5	124	1/6	820	2.00	2025	486	1	13	39
H-98	587	146.0	141.0	114	1/4	1100	2.50	2400	788	3	13	51
H-114	698	173.7	167.8	123	1/6	1075	2.00	2470	620	2	13	53
H-102	649	160.9	155.4	130	1/4	820	3.60	2060	518	2	14	47
H-122	756	187.7	181.3	117	1/4	1075	3.60	2930	735	3	14	54
H-136	834	206.8	200.0	135	1/4	820	3.60	2470	419	2	14	44
H-166	970	241.1	232.9	121	1/4	1075	3.60	3520	562	3	14	52
H-144	915	226.8	219.4	136	1/3	820	4.90	2690	453	3	14	45
H-174	1070	265.0	256.0	122	1/3	1100	4.90	3830	646	4	14	56
H-194	1150	285.9	276.0	139	1/3	820	4.90	3235	413	3	15	51
H-234	1340	333.3	322.0	125	1/3	1100	4.90	4605	590	3	15	58
H-250	1385	344.7	333.0	122	1/2	1075	10.10	5000	646	4	16	60
H-400												

TABLE 2

STANDARD STEAM UNIT (MAX. 15 PSIG)

CAT. No.	STEAM - 2 PSIG ENT. AIR - 60°F				MOTOR			CFM @ 60°F	OUTLET VELOCITY	SOUND CLASS	SPREAD STEAM 2 PSIG	
	EDR	COND. lb/hr	MBH	FIN. TEMP.	NOM. HP	NOM. RPM	NOM. AMPS. @ 115 V				H	S
HS-25	109	27.2	26.2	113	1/20	1000	0.94	460	483	1	9	24
HS-31	130	32.3	31.2	102	1/20	1550	0.94	680	714	1	9	38
HS-39	162	40.3	38.9	121	1/20	1000	0.94	595	495	1	9	21
HS-47	193	48.0	46.4	109	1/20	1550	0.94	880	683	1	9	30
HS-43	174	43.4	41.9	114	1/12	1000	1.50	725	559	1	9	24
HS-51	213	53.0	51.2	102	1/12	1550	1.50	1120	756	2	9	41
HS-73	301	74.8	72.3	104	1/6	1075	2.00	1525	800	2	12	38
HS-95	396	98.4	95.1	109	1/6	1075	2.00	1800	442	2	14	46
HS-97	405	100.1	97.3	113	1/4	820	2.50	1685	540	2	14	43
HS-113	473	117.4	113.4	104	1/4	1100	2.50	2400	772	2	14	52
HS-117	490	121.9	117.7	113	1/4	820	3.60	2060	540	2	14	42
HS-137	572	142.0	137.2	103	1/4	1075	3.60	2930	772	2	14	50
HS-175	729	182.0	175.0	120	1/3	820	4.90	2690	467	3	15	49
HS-205	851	211.2	204.2	109	1/3	1100	4.90	3830	667	4	15	59
HS-265	1106	274.7	265.4	109	1/2	1075	10.10	5000	672	4	16	63
HS-420												

REVIEWED  
REVIEWED AS MODIFIED  
REVISE AND RE-SUBMIT  
NOT REVIEWED

Reviewed only as to general conformity with the design code. The Engineer does not warrant or represent that the information contained on this drawing is either accurate or complete. Sole responsibility for correct design, details and dimensions shall remain with the party submitting the drawing.

DATE 08 AUG 2005 BY aw  
AGN ENGINEERING LTD

